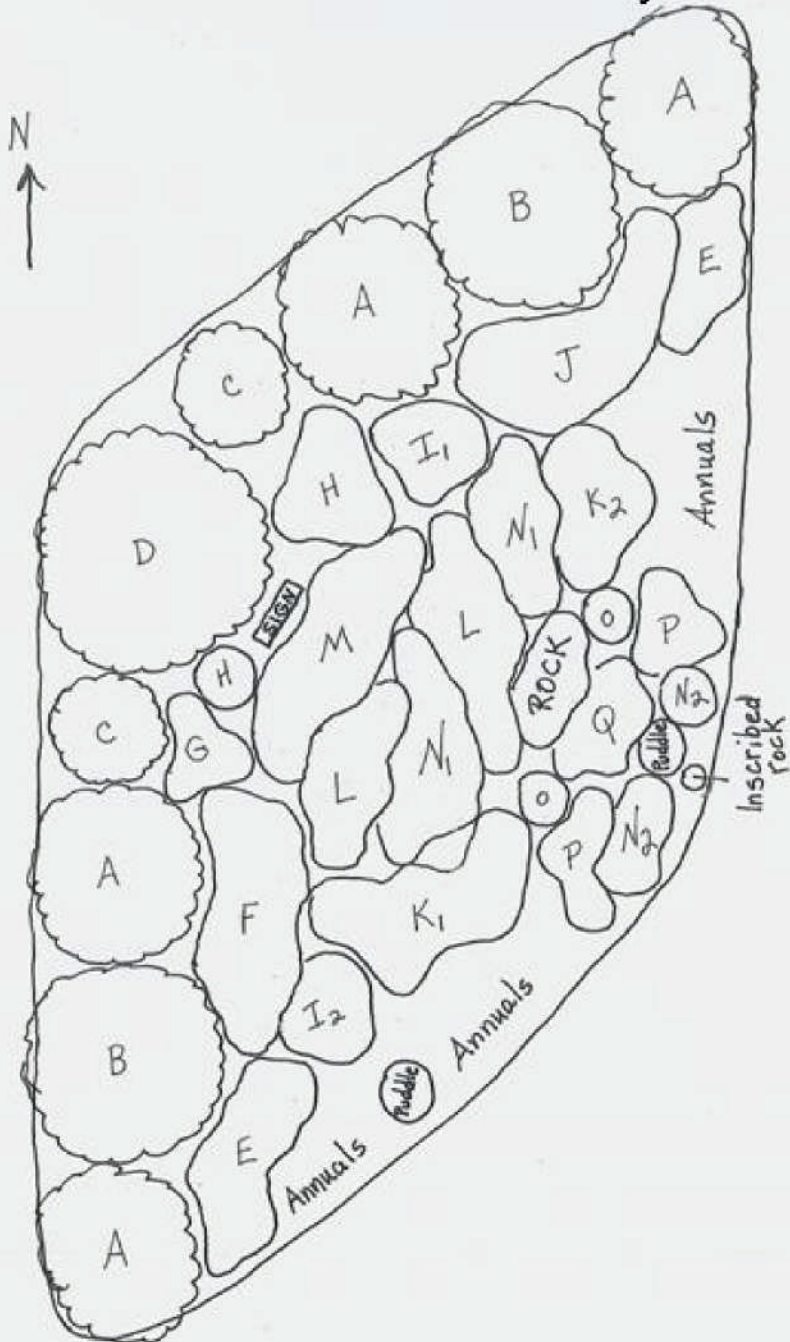


Layout and Identification of the Plantings of the Butterfly-Hummingbird Garden, At the Bath Community Activity Center. By the Bath Alpha Garden Club - 2004



Map Key

- A. Butterfly Bush
- B. Wegelia 'Varigata'
- C. Joe Pye Weed
- D. Lilac 'Miss Canada'
- E. Sedum 'Autumn Joy'
- F. Purple Coneflower 'Magnus'
- G. Foxglove
- H. Hyssop
- I1. Yarrow 'Coronation Gold'
- I2. Yarrow 'Moonshine'
- J. Bee Balm 'Jacob Cline'
- K1. Aster 'Purple Dome'
- K2. Aster
- L. Liatris 'Kobold'
- M. Butterfly Weed
- N1. Coreopsis 'Golden Shower'
- N2. Coreopsis 'Moonbeam'
- O. Pearly Everlasting 'New Snow'
- P. Salvia
- Q. Beardtongue

Annuals

- Candytuft
 - Cosmos
 - Impatiens
 - Mexican Sunflower
 - Nicotiana
 - Parsley, Host plant for Black Swallowtail caterpillar
 - Pentas
 - Snapdragon, Host plant for Buckeye caterpillar
 - Spider Flower or Beeplant, Host plant for Checkered White caterpillar
 - Verbena, Host plant for the Buckeye caterpillar
 - Zinnia
- Host plants should be in the garden every year, although some will reseed themselves. Some of the others should also be included, but the selection may vary from year to year.