

# BATH NATURE PRESERVE

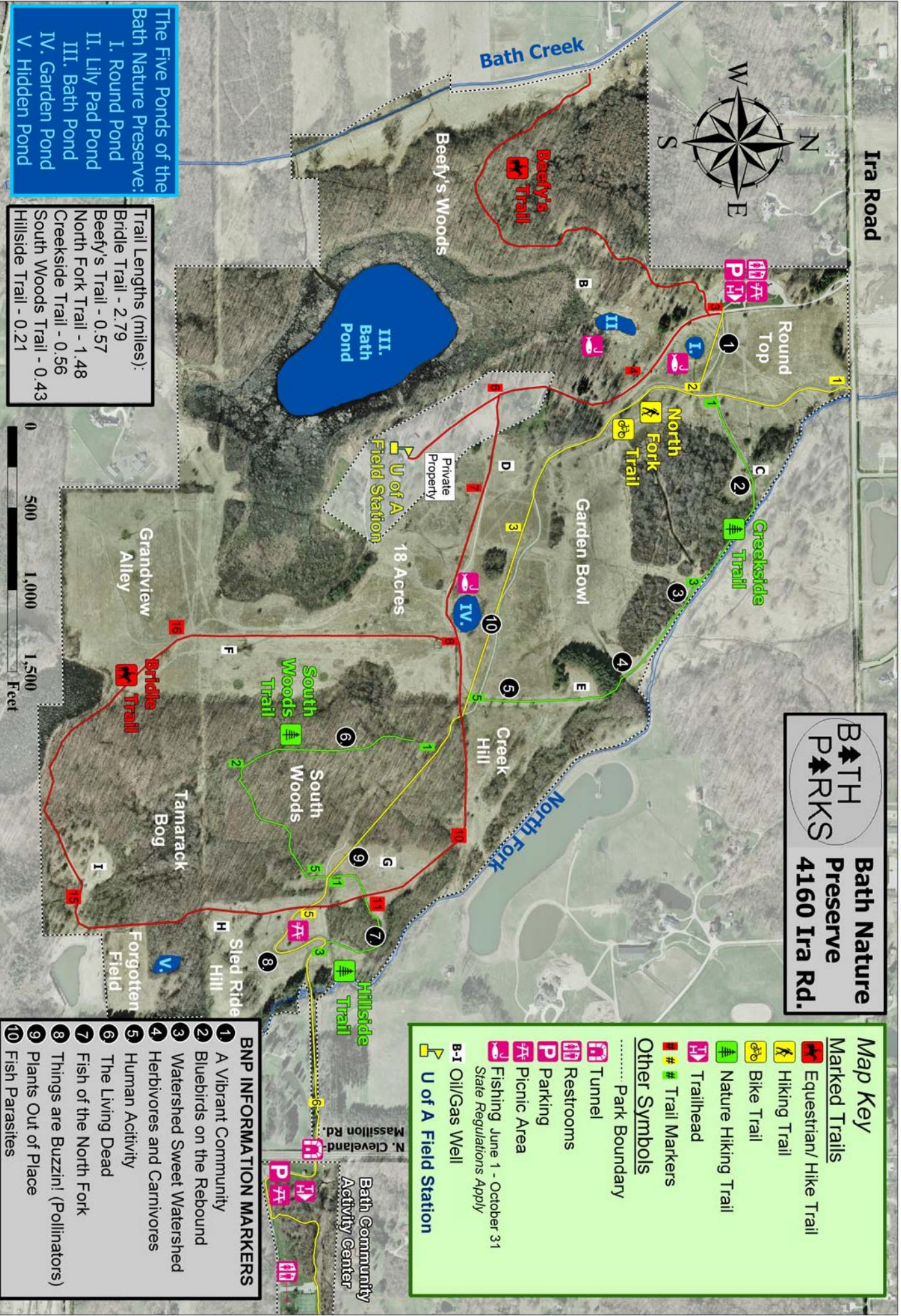
**BATH PARKS**  
**Bath Nature Preserve**  
**4160 Ira Rd.**

**Map Key**  
**Marked Trails**  
 Equestrian/Hike Trail  
 Hiking Trail  
 Bike Trail  
 Nature Hiking Trail  
 Trailhead  
 Trail Markers  
**Other Symbols**  
 Park Boundary  
 Tunnel  
 Restrooms  
 Parking  
 Picnic Area  
 Fishing June 1 - October 31  
State Regulations Apply  
 B-1 Oil/Gas Well  
 U of A Field Station

**BNP INFORMATION MARKERS**  
 1 A Vibrant Community  
 2 Bluebirds on the Rebound  
 3 Watershed Sweet Watershed  
 4 Herbivores and Carnivores  
 5 Human Activity  
 6 The Living Dead  
 7 Fish of the North Fork  
 8 Things are Buzzin! (Pollinators)  
 9 Plants Out of Place  
 10 Fish Parasites

**The Five Ponds of the Bath Nature Preserve:**  
 I. Round Pond  
 II. Lily Pad Pond  
 III. Bath Pond  
 IV. Garden Pond  
 V. Hidden Pond

**Trail Lengths (miles):**  
 Bridle Trail - 2.79  
 Beefy's Trail - 0.57  
 North Fork Trail - 1.48  
 Creekside Trail - 0.56  
 South Woods Trail - 0.43  
 Hillside Trail - 0.21



This map is for informational use only. No representation is made or warranty given as to its content. The user assumes all risk of use. Bath Township assumes no responsibility for any loss or delay resulting from such use. Data Source: Summit County GIS data. Prepared by the Bath Township Parks Department, August 2010. BNP Information Markers made by Heath Garris 2/6/2009; hwg3@zips.uakron.edu